

DANIEL BUTTERWORTH

LETTINGS & PROPERTY MANAGEMENT



Office 1



Office 1 Albany Street
, Newton Abbot, TQ12 2AN

A choice of offices in this town centre premises overlooking Victoria Gardens from £200 to £500 per month. With approximately 57 to 350 square feet (5.4 to 32.5 square meters) of workspace, equipped with worksurfaces, the offices include WIFI, light & power and are radiator centrally heated.

£400

Office 1 Albany Street

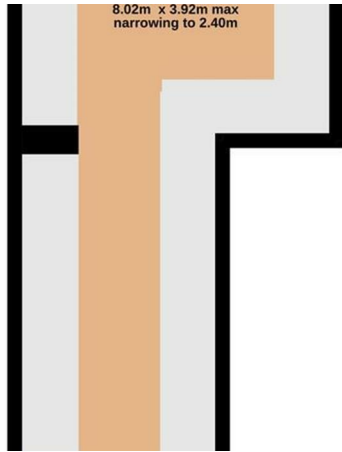
, Newton Abbot, TQ12 2AN



- Town Centre Office
- Communal Facilities
- Bills Included
- Well-Maintained Building
- WIFI Included
- Secure Telecom Entry System

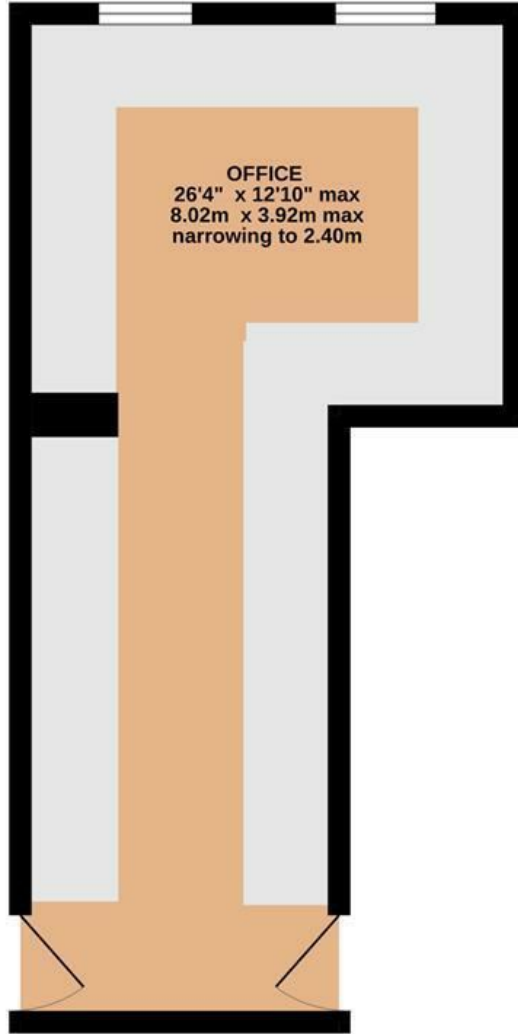


[Directions](#)



Floor Plan

GROUND FLOOR
264 sq.ft. (24.5 sq.m.) approx.



TOTAL FLOOR AREA : 264 sq.ft. (24.5 sq.m.) approx.

Whilst every attempt has been made to ensure the accuracy of the floorplan contained here, measurements of doors, windows, rooms and any other items are approximate and no responsibility is taken for any error, omission or mis-statement. This plan is for illustrative purposes only and should be used as such by any prospective purchaser. The services, systems and appliances shown have not been tested and no guarantee as to their operability or efficiency can be given.
Made with Metropix ©2025

These particulars, whilst believed to be accurate are set out as a general outline only for guidance and do not constitute any part of an offer or contract. Intending purchasers should not rely on them as statements of representation of fact, but must satisfy themselves by inspection or otherwise as to their accuracy. No person in this firm's employment has the authority to make or give any representation or warranty in respect of the property.

5 Ferndale Road, Torquay, TQ2 6JT
Tel: 01803 262772 Email: info@daniel-butterworth.co.uk daniel-butterworth.co.uk

Energy Efficiency Rating		Current	Potential
<i>Very energy efficient - lower running costs</i>			
(92 plus) A			
(81-91) B			
(69-80) C			
(55-68) D			
(39-54) E			
(21-38) F			
(1-20) G			
<i>Not energy efficient - higher running costs</i>			
England & Wales		EU Directive 2002/91/EC	